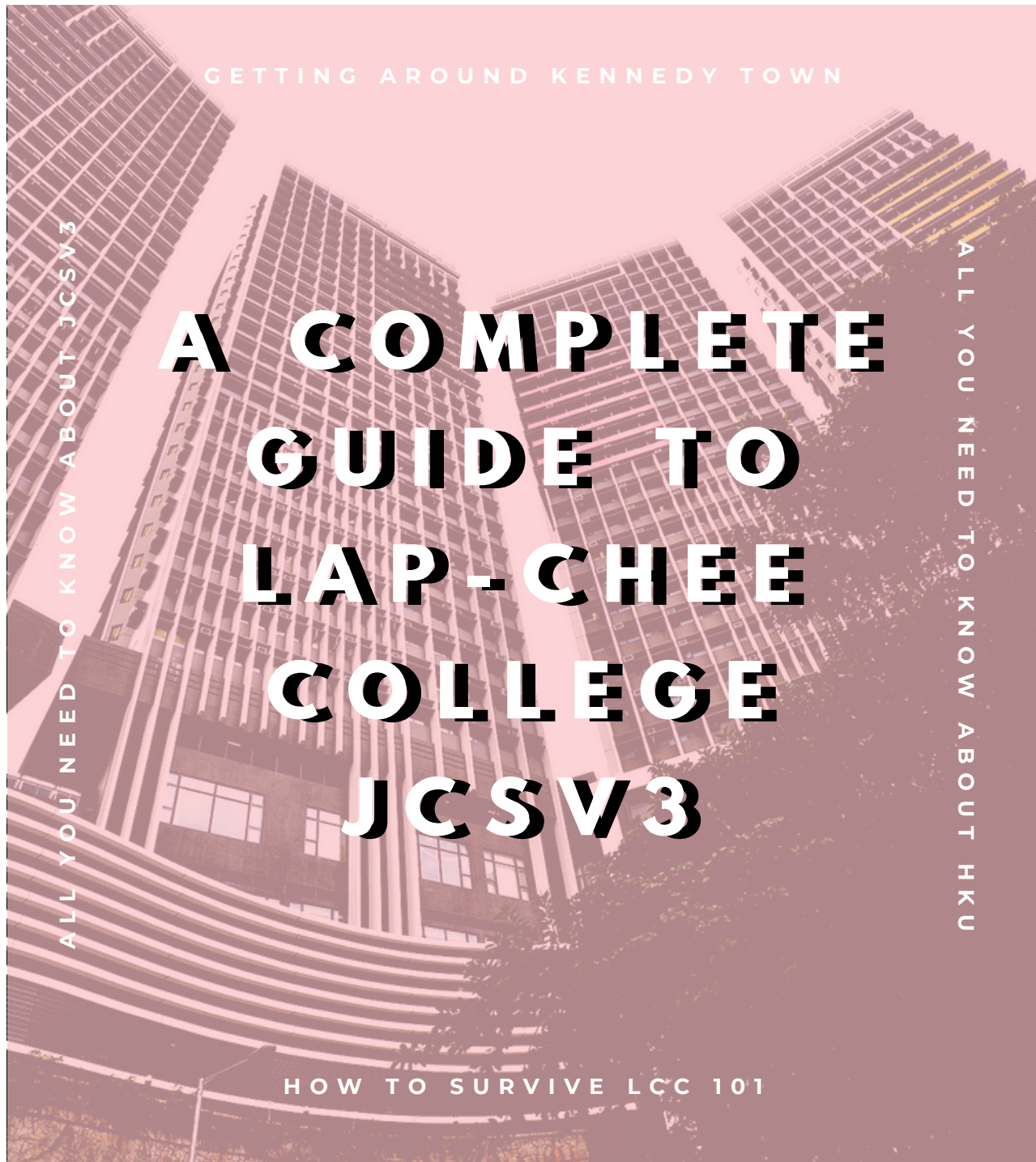


CHEE-RS

LAP-CHEE COLLEGE SURVIVAL GUIDE 2024/25



IN THIS ISSUE

WELCOME ONBOARD!

- Useful tips while starting a new journey in Hong Kong & Lap-Chee College

01

COLLEGE DIRECTIONS

- Directions to get to Lap-Chee College from MTR & HKU
- Procedure for Mass Check-in

03

COLLEGE FACILITIES

- Elevating college life with spaces for study, creativity & convenience

07

COLLEGE CLUBS

- Countless Lap-Chee societies available for you to join

11

AROUND HKU

- Rare tips on actual good uni food
- Printing 101 and making the best use of the study rooms in HKU

19

AROUND K-TOWN

- Must-try Restaurants, Coffee & Desserts
- Reliable places to get your Groceries and Shopping done

23

BASIC HK LIFE TIPS

- Essential apps you must get, General shopping guides and Ponzi schemes

28

PREPARED BY
LAP-CHEE COLLEGE
AMBASSADORS:

ALICIA
ANNIE
DHRUV
JOHNNY
KIMMY
LIZ
NATALIE

WITH SUPPORT FROM:

SALLY & PAUL

WELCOME ONBOARD!

Everything you'll need to kick-start your life in Hong Kong & Lap-Chee College



Welcome to Lap-Chee College:

The college was named after Professor Tsui Lap-Chee, the 14th Vice-Chancellor and President of HKU.

We offer an academic and social environment that is both intellectually vibrant and culturally rich.



Important Documents

- **Passport, Student Visa, HKID** - make sure to safe keep them! Utilize our lock-able top drawer in you room.
- Sometimes hardcopies are better. Do keep a hardcopy of some important emails / visa handy!

LCC Orientation Key Dates

Mark your calendars & keep an eye on your emails!

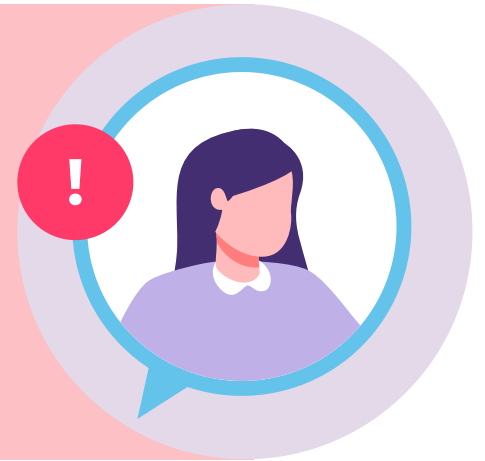
- 12 & 14 Sep | Mid-Autumn Mooncake Delivery Volunteer
- 15 Sep | New Lap-Cheers Orientation Day
- 21 Sep | Lap-Chee College City Hunt
- 25 Sep | Admission Ceremony (Compulsory)
- 27 Sep | Welcome Reception & Club Recruitment (Compulsory)



Don't forget to follow us on IG @lapcheecollege !!!

Emergency Contacts

- Save important / emergency contacts on a non-digital platform (diary / wallet / etc.)
- Note down the address (or keep the pink card at the 4/F Lobby with our hall address!) in both English or Chinese. This information will come in handy if your phone dies or you want to get on taxi



Importance of Social Life

- Get to know your hall mates & floor mates!
- Regularly check your emails to stay updated about all the events in HKU & LCC. You don't want to miss out the information about clubs & student associations in uni or hall!
- Research local attractions and events to explore!



High Table Dinner (HTD) Dress Code

Your first HTD is coming soon: Get your formal wear prepared!

*Green gown / black gown for new students will be presented to you at the Admission Ceremony



DIRECTIONS

Home Sweet Home, Lap-Chee College JCSV3



STOPPING BUS 12 IN CANTONESE

suk1 se3 jau5 lok6 !
please stop at JCSV3!

ADDRESS FOR DELIVERY:

C-(room number + A/B)
Lap-Chee College,
JCSV3, 9 Lung Wah St,
Kennedy Town, HK

HOW TO GET FROM KENNEDY TOWN MTR TO LAP-CHEE COLLEGE

walk

The hall is located on a steep hill, but it's free. Exit from Exit C and walk past the Wellcome up the hill, or Exit A and cross the road mid-hill.

minibus 12

You can catch the minibus number 12 outside exit A at Kennedy Town station, or in front of Kennedy Town McDs. Do take the back seats to be considerate to our senior community!

taxi

Best option when you are carrying luggages. It will cost basic fare + luggage fees if any.



Under no circumstances are you allowed to trespass the Kwun Lung Lau complex beside the Student Village (Trespasses will face disciplinary action)



HOW DO I GET TO UNI?

GOING TO **MAIN CAMPUS** FROM **LAP-CHEE COLLEGE**

walk (~20 mins)

1. Via Pokfield Road followed by Pokfulam Road (disclaimer: might get a little tiring due to steep hill)
2. Via Belcher's Road (flat ground!) & go down to the HKU Station Exit B1 / B2

MTR (~10 mins)

K-Town to HKU is just one MTR station away. Why walk when you can enjoy the AC & travel without breaking a sweat?

*During rush hours (morning or after lunch), there will be a LONG queue going up to campus from HKU exit A and exit C!

GOING TO **SASSOON ROAD CAMPUS** FROM **LAP-CHEE COLLEGE**

JCSV3 Shuttle Bus

Buses will depart from the JCSV3 1st-floor car park every 20 minutes between 8:00 AM and 9:20 AM Monday to Friday.

mini bus

Take Green Mini Bus number 54M or 23 or 23M in front of K-Town MTR exit A. Get off at Queen Mary Hospital & walk down



INSIDER'S TIP!

If you are under 25, apply for the MTR Student Travel Scheme and enjoy discounted fares! The application can be done in two ways: online and hardcopy form submission. Please scan the QR code or visit [here](#) for more instructions.



MASS CHECK-IN GUIDE

Home Sweet Home, Lap-Chee College JCSV3



JCSV3 GENERAL OFFICE

The 4 colleges in this Village operate independently but are administered by the same General Office.

General Office Opening Hours:

Mondays to Fridays | 09:00 to 18:00;
Closed on Saturdays, Sundays, and
University & Public holidays.

CHECK-IN ARRANGEMENT

During General Office hours:

Register & collect room keys and smart cards at the Check-in Counters on the Podium (Level 4/F).

Outside of office hours:

Fill out the online form in your room allocation email at least 2 days before for approval & case-by-case arrangement.

DOCUMENTS REQUIRED FOR CHECK-IN

Current Students:

- HKU Student Card

New Non-Local Students:

- Passport/Entry-Exit Permit (通行证)
- Valid Student Visa on your Passport/EEP
- Notice of Admission Letter

New Local Students (UGs and PGs):

- HKU Student Card OR
- HKID Card OR
- Notice of Admission Letter.

LODGING FEES & OTHER CHARGES

Lodging Fees:

The total amount will be notified by the General Office with the admission offer. Lodging fees are charged in two instalments: 1st & 2nd semester

Other Charges:

Lodging charge do not cover electricity consumption for air-conditioning and laundry facilities, which should be paid separately using stored-value cards (your pink cards!)

For the most updated info, kindly refer to your offer email, or contact the general office at jockeyv3@hku.hk

MASS CHECK-IN GUIDE

Home Sweet Home, Lap-Chee College JCSV3

PERSONAL ITEMS

- Prepare two to three padlocks for personal storage.
- Bring your own pillows, bedspread, and quilts.
- Bed size in Double CORNER Rooms: ~213cm(L) x 91.4cm(W)
- Bed size in Double Rooms & Single Rooms: ~190cm(L) x 91.4cm(W)
- Loan of beddings is not available.
- Shipment storage service is not provided before students' arrival (check-in).



INSIDER'S TIP!



Recommend you to have around HK\$1000 - 2000 cash when you arrive in HK for transportation & housekeeping items before you create your bank account

- Get prepared for HK's Humidity - get dehumidifiers for your wardrobe, and do laundry frequently!
- Set of formal wear & shoes is a MUST.
- Do think about power adapters & voltage converters if needed! (HK operates at 220V, 50Hz supply)
- Don't forget your medications / doc's prescription, if any.

ROOMKEYS & SMARTCARDS

- Room keys & smartcards are issued to residents upon check-in.
- Smartcards are used for air-conditioning in the bedroom and laundry facilities.
- Smartcards can be recharged at the add-value machine opposite the General Office Help Desk, with a minimum recharge value of HK\$10. All smartcard values are non-refundable.

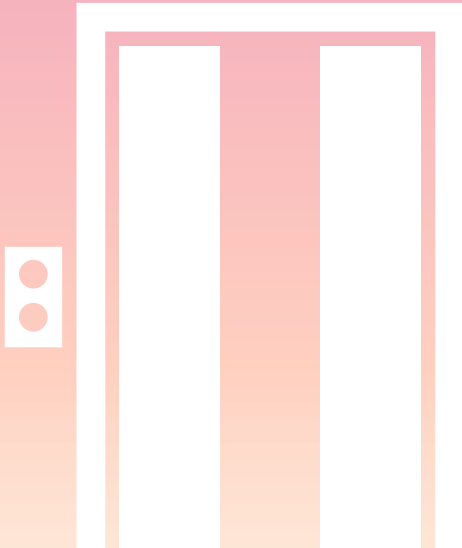


COLLEGE FACILITIES

Make the most of your time at Lap-Chee College



3/F



Welcome TO THE YAO LING SUN CULTURAL COMMONS

With a generous bequest from the late Mr. Yao, the Yao Ling Sun Cultural Commons was established to provide an exceptional hub for residents from around the globe to connect, share, and contribute.

The Cultural Commons encompasses various facilities, including a multi-purpose Studio with mirrored walls, a Student Lounge, a well-furnished Chinese Tea Chamber, and an audio-equipped music room.

Music Room (301)



Equipped with music instruments such as an upright piano, drum kit, and audio equipment, feel free to drop by and hone your musical skills!

*Prior booking required

Study Room (302)

Whether you need a place to rush that deadline or a room to unwind, the Study Room is open 24/7! Study desks can house up to 20 residents at a time.



Chinese Tea Room (303)



Housing a curated collection of books and traditional Chinese furniture, this room is fit for various cultural activities, or just regular meetings.

*Prior booking required

Studio (304)

Featuring mirrored walls, chairs, tables and A/V equipment this space is ideal for large events, dance classes, indoor sports and more!

*Prior booking required



*Please keep the common spaces clean and in good condition for everyone in college to enjoy Any student who misuse the space will be facing consequences.

Here's THE 4TH FLOOR COMMON SPACE FOR ALL

TV Room



The TV Room is open from 9 AM to 2 AM everyday. Residents may come with friends to hang out and lounge on the sofa! A multi-purpose room, the TV Room is also fitting for society meetings and more.

Lobby



The lobby area of Lap-Chee College is adorned with antique wooden Chinese furniture, offering students a cozy and serene spot for vibrant cultural exchanges, social meetups, and academic inspiration.

Function Room (4th Floor)



Need a change of scenery for your study sessions or just a place to unwind? Come to the function room! Remember that you have to sign in with the security team at the front desk to access this room.

*Please keep the common spaces clean and in good condition for everyone in college to enjoy Any student who misuse the space will be facing consequences.

STUDENT ROOMS & COMMON FACILITIES

Residences: 6/F - 25/F



Your Room

Home for the academic year! All of our rooms are furnished with beds, wardrobes, writing desks with lamps, chairs and bookshelves. They are also connected to the HKU Campus Network for internet access. Tap your pink card on the machine & you can enjoy air-conditioning services.

Note that no outside visitors or visitors of the opposite gender from other floors are permitted in your room after 11 p.m. To respect the Quiet Hours of the College, please avoid making noise from 11 p.m. to 8 a.m. of the next day.

Remember to make yourself feel at home in Lap-Chee College!

Floor Pantry

On each floor, we have spacious pantry which may accommodate various student activities. Furnished with a TV, microwave, sink, induction stove and fridge, the lounge recreates a homely ambiance, catering to students' needs. Feel free to drop by to cook up a meal or hang out with your floor mates!

*Remember to clean up after you use!



Common Bathrooms

In every residential floor, there will be a common bathroom for all residents to use. Each bathroom has 4 toilets and 4 shower rooms. We also provide cubbyholes for every resident to put their toiletries!

Warm Reminder:

- Maintain personal hygiene!
- Wash hands after using toilet!
- Pick up hair and trash after bathing!
- No littering! Garbage belongs to the rubbish bin!



LAUNDRY 101

Never done laundry before? Worry not!

Everyone gets a pink smart card once you check in. It can be recharged at the 4F lobby, and used for AC or laundry on the **26th floor**.

There are six washers and dryers available in Lap Chee. You are required to buy your own detergents.

Washing machine : HKD 5 / wash

Dryer : HKD 2 / 10 minutes



HYGIENE! IS! KEY! LET'S KEEP OUR COLLEGE CLEAN!!

The kitchen, toilets, showers, and other common areas are **not** just for you.

To maintain a healthy & clean environment, please maintain personal hygiene: **clean up** after yourself and respect the common area. Also, **stealing (including food) is a serious crime** and will result in heavy consequences.

How to avoid fire alarm? *Avoid any danger!*

While cooking don't leave anything unattended in the kitchen. Don't boil or cook things in your room.

JCSV3 and Lap-Chee is a non-smoking premise. Fire alarms are treated very seriously in Lap-Chee. Triggering false fire alarms can result in serious consequences.

Keep away from Kwun Lung Lau!



You may often find it a little tiring to come up the extremely steep hill to arrive at Lap-Chee College. That steep hill is the Smithfield Road (the Green Line from the image below).

Residents are only allowed to use this road and **NOT trespass Kwun Lung Lau** (Red Lines).

Some have been caught trespassing before and any residents found trespassing Kwun Lung Lau will face **immediate suspension** as it is a "private property."



LAP-CHEE COLLEGE ADVISORY COMMITTEE

Dr Patrick Poon, Chairman
Professor M F Yuen, College Master
Ms Pauline Liu
Professor Rainbow Ho
Mr C F Kwan
Mr K M Wong

LCC CLUBS & SOCIETIES

Make sure to look out for each club's recruitment emails to join!
Wanna learn more? Come by the Welcome Reception on Sep 27 (Fri)
to know more about each clubs & sign up on the spot!

Lap-Chee College Ambassadors (LCA)

Lap-Chee College Ambassador is a multinational and multicultural community that manages some signature activities in the college (e.g., Welcome Reception, Halloween, Superpass, Farewell Party & more) to develop Lap-Cheers' interpersonal, organisational, and social skills.

LCA also aims to engage students to build community spirit and create an environment for students to grow leadership skills. Come and join the fellow team members to build up the Lap-Chee spirit!

Find us on IG:
@lapcheeambassadors
@humans_of_lapchee



The Laidback Art Club



The LCC Art Club provides a space to explore passions and possibilities through arts, we welcome Lap-Cheers from all levels to join us, make friends and enjoy the creative time!

Find us on IG:
@hku_lccartclub



Rotaract Club of HKU Lap-Chee College International

Create impact and connections with the Rotaract Club of HKU Lap-Chee College International! Here, you can...

1. Unite with Changemakers
2. Cultivate community bonds up close
3. Elevate Your Potential
4. Broaden Your Horizons

Ready to make a difference? Join the Rotaract Club of HKU Lap-Chee College International to uplift, connect, and inspire and be the change your community deserves!



Global Diversity and Inclusion Team



Find us on IG:
@lapcheeglobaldiversity

Lap-Chee Global Diversity and Inclusion Team aims to bring together pacesetters committed to building an environment of equal opportunity and representation across different races, gender, sexual orientation, religion, culture and so much more. Our mission is to collaboratively use our intellect and diverse life experiences in creating a safe space, where all individuals are seen, heard, and supported.

Join us today in building the fair and supportive world we all yearn for!

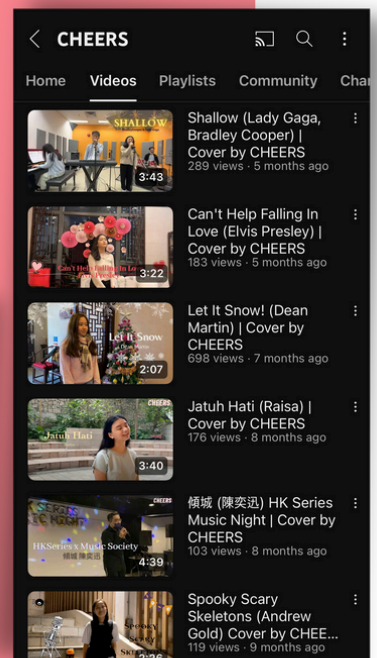
Music Society CHEERS

Find us on IG:
@lapchee_cheers

Music Society CHEERS is a community open to anyone with passion and love for music. We aim to provide diverse opportunities for the residents to enjoy music through various online and offline performance events and platforms.

CHEERS is currently accommodating three different teams, including the Band, Choir & Acapella and Youtube Channel Management Team.

If you are ready to collaborate and share your musical talent with fellow Lap-Cheers, join CHEERS today!



Hong Kong Culture Explorer

(formerly known as "Hong Kong Series")

The Hong Kong Culture Explorers in Lap-Chee College celebrates local Hong Kong culture by unveiling its unique and historical aspects.

Find us on IG: @lcchkseries



We aim to establish close ties between Lap-Cheers and local communities through workshops and tours, fostering knowledge exchange and strengthening bonds among hall mates. Join us for meaningful activities that benefit society!



Media Team

The LCC Media Team covers the different happenings around the College: high table, arts, music, food, communal life, school... you name it.

Experience would be great but everyone is welcome - as long as you're passionate about writing, social media, photography, or something media.

This year, we will also start a project to improve the College official website - join us if you're interested!



High Table Dinner Committee



In High Table Dinner Committee (HTDC), you will not only have the chance to organize formal college events such as Admission Ceremony, High Table Dinners, and Farewell Party, but also gain exposure to collaborate with other in-college teams and many external guests. Most importantly, you can make lifelong friends and create memorable experiences together as all members form a tight-knitted community.

HTDC comprises the following four core teams:

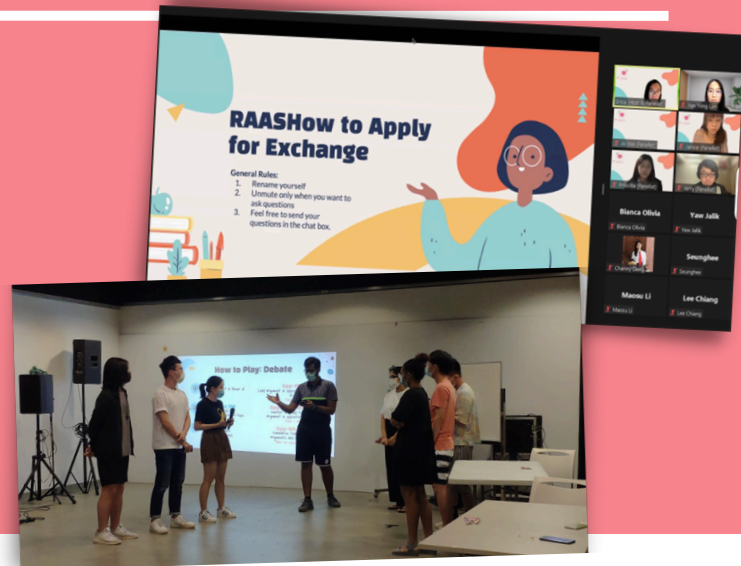
- Floor Management
- Marketing Communications
- Stage Management
- External Affairs.

Residence-based Academic Advising System

Residence-based Academic Advising System (RAAS) at Lap-Chee College aims to help freshers (Year-1 students) get started on their academic journey. Through experienced students who are willing to share their knowledge and experience, freshers receive first-hand guidance in navigating a new educational paradigm.

Every fresher who enters Lap-Chee College is automatically enrolled in RAAS.

Find us on IG: @raas_lcc



Think@Café



We are the Think@Café Club, a group dedicated to fostering creativity and joy among residents of LCC. Our goal is to generate innovative ideas and promote a positive atmosphere.

Despite having valuable and promising ideas, we often find ourselves holding back. Why does this happen? We believe it's because we lack proper guidance from experts.

We hope to create a platform where you can freely share your fresh ideas, inspire others, and gain valuable insights from their experiences.

By joining us, you'll have the opportunity to flourish in life, achieve more, and unlock the full potential of your mind. We invite you to be a part of our community and embark on this exciting journey together.



"Dealing with Stress" Sharing Session

Village-to-Village Team

The Lap-Chee College Village-to-Village Team create opportunities for students to connect, learn, and have a great time exploring new places and cultures.

We organise short-term exchange trips between Lap-Chee College and other university colleges like International Campus of Zhejiang University and Choi Kai Yau College of Macao University. Students from these institutions come together, visiting each other's campuses, learning about different cultures, making new friends, and having fun experiences.



Cooking Club

The Lap-Chee Cooking Club hosts exciting cultural events that bring together the Lap-Chee College community! They are passionate about introducing residents to the rich and diverse world of Chinese cuisine, teaching the attendees how to make traditional Chinese dishes such as Qingtuan, Zongzi, Rice balls, mooncakes, and more.



But these events go beyond just cooking - they also provide an opportunity for cultural exchange and community building in celebrating and exploring Chinese culture through food and conversation. These events have been well-loved by attendees, who appreciate the chance to learn about Chinese traditions and enjoy the delicious food that follows.

Joint College Dance Team



JCDT consistently host a series of engaging dance workshops, covering a diverse range of styles to foster inclusivity and encourage widespread participation and enjoyment among attendees. They participated in various events held in the Village providing amazing performances that never fail to dazzle and delight audiences, shining a spotlight on the beauty and excitement of dance.

JCDT is a premier dance team dedicated to expanding and enriching the dancing culture in the Jockey Club Student Village III, which is made up of talented dancers from the Shun Hing, Chi Sun, and Lap-Chee Colleges, who work together to provide the best orientation for beginners and the brightest stage for skilled dancers.



Badminton Team

Welcome to Badminton Club, where passion meets athleticism! Players of all abilities are welcome to join our team, where you can meet new friends, sharpen your skills, and immerse yourself in the exhilarating world of badminton.



Basketball Team

Welcome to Basketball Team! We are gathering here not only for our future basketball matches with other colleges of JCSVIII but also for all beginners to enjoy basketball despite their gender.



Dodgeball Team

Lap-Chee Dodgeball team provides a chance to enjoy a recreational and health-beneficial game at the same time. We will make new friends through interactivity and teamwork through the game and bond as a community. Our dodgeball game is easy to learn and brings you exercise and enough fun! All are welcome!



Football Team

Welcome to Lap-Chee Football Team! We are gathering everyone from Lap-Chee College who is interested in playing football, regardless of their background. Don't worry if you are a beginner, as we have training every week, where we can improve our skills better.



Hiking Team

Welcome to Lap-Chee Hiking Team! We have more than 60 fellows who actively explored various Hong Kong Country Parks in the past academic years. Various hiking tours were scheduled to various hiking trails including Dragon's Back, Tai Tam, and Lion Rock.



Tennis Team

Welcome to our tennis club, where we combine a love of tennis with a passion for community and camaraderie. Whether you're a beginner or an experienced player, we invite you to join us for fun, fitness, and friendship on the court.



Volleyball Team

Lap-Chee volleyball club is a team that is trying to hold weekly volleyball training for Lap-Chee residents. The club is looking for passionate members at any level of playing volleyball. Thus, if you are interested in learning volleyball or improving your skills besides having so much fun, do not hesitate to try playing with our club.



Chess Club

Welcome to the Lap Chee College Chess Club, where minds meet on the 64-square battlefield! Whether you're a newcomer learning to move your pawns or a seasoned grandmaster, this is your arena for strategic growth, camaraderie, and the timeless thrill of chess. Let's checkmate the monotony of dorm life together!



Running Team

Welcome to Lap-Chee College Running Club! Come run with us once a week along the harbor to de-stress and build and bond with other residents, no matter your skill and experience.



Ultimate Frisbee Team

Welcome to the Lap Chee College Ultimate Frisbee Club, where we're all about throwing discs and having a blast! Whether you're a beginner learning the basics or an aficionado in the sport, join us for some casual fun and competitive teamwork!



Squash Team

Squash team aims to provide enriched learning and exercise opportunities for students. During the exercise, participants can become healthier and get familiar with other Lap-Cheers.

We will organize regular sessions biweekly on the weekend, and participants will gather at Smithfield Sports Centre and play in groups for 1-2 hours.



Swimming Team

Hello everyone, we are Lap-Chee Swimming team. We organize weekly swimming activities (not mandatory) in Henry Fok Swimming Pool. Anyone who enjoys swimming is welcome to join!



Table Tennis Team

Introducing the Table Tennis Club! 🏓

Whether you're a beginner or a seasoned player, our Table Tennis Club welcomes everyone to join and enjoy the exciting sport. Unleash your potential, improve your skills, and have a fantastic time playing table tennis with us!



Chinese Chess Club

Welcome to the Lap-Chee College Chinese Chess Club! Whether you're a novice or a grandmaster, we welcome players of all levels. Ready to test your intellect in thrilling competitions? Join Chinese Chess Club and unleash your strategic brilliance!



DON'T FORGET

BASIC ETIQUETTE @ LCC EVENTS

- Wear smart casual attires (no flip-flops!)
- Greet friends and tutors! (say Hi~)
- Ask questions wisely~
- Be mindful and respectful with your words!
- Listen first before talking!
- Queue in line, don't cut!
- No littering and keep trash with you!
- Don't always be on your phone, meet friends!
- Assist friends if they need help!
- Follow formal etiquette during High Table Dinners!

**FIND OUT MORE DETAILS ABOUT EACH CLUBS
AND STAY TUNED TO SIGN-UPS!**

<http://www.lapcheecollege.hku.hk/teams/>

GETTING AROUND THE UNIVERSITY

where to eat? where to print? what's what?

GOOD UNI FOOD

Although off-campus food may be considered better, the food in HKU is cheap and also fairly fine (cost-effective).

A useful app to have is food@hku which has the opening hours and menus of all the restaurants on campus.



BIJAS

Bijas is the place for you if you want vegetarian. A pay-by-weight buffet style and serves Canto food cooked in Buddhist style.

Highly recommend their breakfast and afternoon tea where you can get a drink + one dish for HKD24 or one drink + 2 dishes for HKD29. Closed on Sundays.

ALFAFA CAFÉ

Newly opened in centennial campus (old delifrance spot). Western casual all-day dining and with a twist of Asian taste.

OLIVER'S SUPER SANDWICH

Newly opened in centennial campus. Menu ranging from sandwiches, pasta and baked potatoes.

COFFEE ACADEMICS

Newly opened next to the Main Library (Old Starbucks spot). Offering a range of coffee beans and some light food.

VENDING HUB

Many vending machines with snacks and drinks at G/F Chong Yuet Ming Amenities Centre.

UNION RESTAURANT

Also called HK Diners, serving local and multinational dishes with relatively cheaper prices. It is located in the middle of Main Campus so an easy-to-reach place!

Located on 4/F
Haking Wong
Building (Podium),
right in front of HKU
MTR Exit A1.

CAFE 330

A cozy coffee shop offering set lunch and dinner menu on a daily basis as well as sandwiches and baked goods.

Located in CYM
building, in front of
ParknShop.

GOURMET ASIA

Offers a wide selection of South East Asian food choices at affordable prices. Their Hainan chicken rice is highly recommended!

Located next to the HKU visitor centre, near the Centennial campus.

FSCAC RESTAURANT

A canteen located at 2/F Fong Shu Chuen Amenities Centre, serving Chinese dishes, noodles, and local snacks.

Look out for special dishes that you won't be able to see in other canteens!

CYM CANTEEN

CYM Canteen is always crowded during lunch times until 2:30 pm.

Sizzler at CYM canteen is definitely a must have if you are trying to survive on a budget! They have pepper-lunch-like pan fried menus, which are popular.

Located on the top floor of the CYM building.

SUBWAY

Classic to-go sandwich, located in front of HSBC. Daily subs offered at \$29.

VENDING NOOK

Want to grab a snack anytime? There are meal boxes, rice balls, chips, drinks, and many other goodies to choose from!

Located on G/F
Composite Building.

KEBAB HOUSE

A self-serve fast food providing Halal, including kebabs, pizzas and biryani rice. Perfect for a quick lunch or snack. Closed on Sundays.

Located on 1/F of the
Fong Shu Chuen
Amenities Centre.

HONG KONG DAILY

A Hong Kong-style sit down restaurant serving local and south East Asian dishes.

Located on the top floor of the CYM building, next the the CYM canteen. Closed on Sundays.



INSIDER'S TIP!

You can skip the queues and order online here!

<https://www.cedars.hku.hk/campuslife/catering/onlineorder>

For the most updated catering outlets on the HKU campus, please visit:
<https://www.cedars.hku.hk/campuslife/catering/catering-outlets>

WHERE TO PRINT?

Knowles Building

Knowles Building is ideal if you have special printing requirements such as if you need glossy paper or unusual sizes for a project or event.

Main Library

To use the Main Library printing, pay using the Octopus card, and bring what you want to print on a USB drive using the computers provided.

Wireless printing (uPrint) is also supported by downloading and installing the printer driver on your own laptop from here:
https://lib.hku.hk/techsupport/WiFi_printing.html

Lap-Chee

JCSV III Lobby

Located at the 4F lobby near the smart card machine. It is a convenient location, but only black-and-white printing is available.

Chi Wah

It allows wireless printing from your own device as long as you use uPrint service or the Chi Wah printing app. You start the year with 100 free units, and you can buy more from the top up machines on every floor (30HKD for 100 units). Nothing feels better than sending a print command from home, and picking up the printout on your way to class

There are many printers around the HKU campus and halls, check out the link below to look for the nearest printers:

<https://its.hku.hk/services/teaching-learning/uprint/>

HOW TO PRINT?

There are two main ways to access HKU's printing services:

- uPrint (<https://its.hku.hk/services/teaching-learning/uprint/>)
- Web Printing (<https://its.hku.hk/kb/web-printing-user-guide/>)

You are welcome to choose the one that is the most convenient for you!

Just remember to bring your HKU Student ID to tap the printers!

BOOKING ROOMS IN CHIWAH & THE LIBRARY

Chi Wah

- Go to booking.its.hku.hk/lebook/book/
- Log in with HKU portal UID
- Select the date and the type of facilities you want to book
- Click on the time slots of the room you want to book
- Click on "Create"
- The room is booked. You can enter the room without tapping your UID.



Library

- Libraries can be booked including Main Library, Dental Library, Tin Ka Ping Education Library, Lui Che Woo Law Library, Yu Chun Keung Medical Library and Music Library
- All facilities including discussion rooms, single study rooms and study tables can be booked at <https://lib.hku.hk/general/e-form/book-a-space.html>



Please note that the maximum amount of time that can be booked will depend on the facilities you are booking.

Bookings can be made **48 hours before** the selected time slot.

GETTING AROUND KENNEDY TOWN

How well do you know your own town?



 **SCAN ME!**

**EXPLORE KENNEDY TOWN
WITH OUR INTERACTIVE
GOOGLE MAPS!**

RESTAURANTS



Tamjai Yunan Mixian (\$)

Noodles from Yunan with variable ingredients and spiciness to choose for. Reasonable price with drinks available for purchase.

Yuan is Here (\$)

Michelin guide restaurant with authentic Taiwanese food. It's always crowded and you can only be seated for 30 minutes during lunch hours. Low price but the portions are small.



Sing Kee (盛記) (\$)

Local restaurants on the top floor of Smithfield market. Very good quantity for reasonable price!

Saizeriya (\$)

Japanese chain of family-style Italian food. Decent prices for its wide variety of meal options



Timur (\$)

Indian-Nepali food available ranged from biryanis and more. Reasonable price with variety of selection.

Yee Kee (\$)

Located right on slope leading to Lap Chee. Opens from 4pm to midnight. A good place to go when you want some food at night. Delivery available.



Shanghai Lao Lao (\$\$)

Hygienic and casual atmosphere is ideal for relaxed lunch or dinner. It offers a range of dim sum and Shanghai dishes that are semi-authentic but tweaked to fit HK-er's taste

RESTAURANTS



Sweetheart Garden (\$\$)

Steakhouse with budgeted price available along with a variety of pasta. If you're looking for a budget lunch or dinner, here's where you should head to.



Pici (\$\$)

Authentic, fresh hand-made pastas and home-style Italian food. Very nice ambience.



11 Westside (\$\$)

Popular Mexican food restaurant. Burritos, quesadillas, enchiladas, Mexican lasagna, tacos are popular choices. Taco Tuesdays (need to book \$50 per person downpayment).



Chicken Factory (\$\$)

Quality chicken with a wide variety of sizes and add-ons. Quite a cozy atmosphere. Good for those looking for protein-rich foods!



Sun Hing (\$\$)

The famous Kennedy Town 3am dim-sum restaurant. Recommendation: Steamy custard bun



Genki Sushi (\$\$)

Japanese restaurant, best for sushi. It is a little pricier than other places but definitely tastes good.



Sheung Hei Claypot rice 嚙嚙煲仔小菜 (\$\$)

Claypot rice cooked over a charcoal stove giving it a characteristic smokiness and a crispy crust at the bottom. Order eel and pork ribs for a rich fish aroma and luscious pork grease that coats every grain. The owner also runs a dim sum shop next door where you can order Cantonese bite-size munchies on the side. It is also another Michelin guide restaurant.

COFFEE & DESSERTS

% Arabica (\$\$)



Iconic % coffee with a view of Kennedy Town harbour. Can be quite crowded at times.

Recommendation:

- Iced Spanish latte

Eric Kayser (\$\$)



Bakery with coffee available. Spend \$50 dollars with a coffee for a relaxing afternoon.

Recommendation:

- Iced latte

Sweet Dreamer (\$\$)

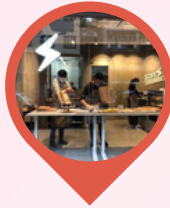


Popular dessert place near Kennedy Town pier. Usually crowded after dinner time

Recommendation:

- Frozen Yogurt

SOFT THUNDER (\$\$)



Bakery with delicious egg tarts, cookies, and special pastries you do not want to miss out!

Recommendation:

- Egg Tart
- Croissant

Summer Ice (\$\$)



The shop features purple sweet potato and matcha desserts with stunning presentations,

Recommendation:

- Purple sweet potato waffle
- Matcha affogato

Ho Ho Desserts (\$\$)



Get tasty desserts made from mangoes, milk, pomelo, sago and more! One of the best places for late-night desserts~

Recommendation: Everything!

INSIDER'S TIP!



scan the QR Code to find more cafés in our Google maps!

GROCERIES & SHOPPING

Kaibo Supermarket



Cheaper options than Wellcome or Park n Shop. Buying fruits or vegetable here is recommended. It closes quite early, and staff speaks limited English.

Wellcome



There are several Wellcomes in K-town, but the one below the hill is the most convenient. This wellcome is quite small, Open until 10 pm.

Park n Shop



There are again, several PnS in K-town but this is the one closest to Lap-Chee. A good balance of affordability and convenience. Have English speaking staff. Open until 10 pm.

Smithfield Market



A place to experience something local. The grocery market is not the cheapest, but the vegetables and fruits are in a great variety and fresher than supermarket chains.

Japanese Home Center (JHC 日本城)



"One-stop" destinations for people looking for quality and a diversified range of houseware items. The products range from digital accessories to household decorations.

759 Store



Where you can buy imported food and snacks (particularly from Asian countries) with fair price.

Tip! Buy over \$300 with your friends so that you can get a membership card and enjoy discounts!

Pricerite



Located next to KFC, Pricerite offers quality household products. It is pricier than Living Plaza or JHC, but this is where you should go to have a look at some good durable products.

SL...OWOOD



Live sustainably by making clean choices. Ranging from food to clothes and cosmetics Slowood offers no-packaging and environmentally friendly items for purchase.



INSIDER'S TIP!

there are a lot of local grocery shops in Ktown! Have a walk around for fresh vegetables!

BASIC HK TIPS

Survive HK 101

USEFUL APPS



MTR



My Observatory



Octopus



Taobao



Foodpanda



Openrice



Carousell



GoGo Van



Citymapper

USEFUL APPS

MTR

App that shows train times and routes you can take for train transits. It can also show the bus routes and timings such as the Mini Bus 12 to Lap-Chee College.

My Observatory

A personalised weather service app developed by the Hong Kong Observatory. Useful especially during typhoon season.

Octopus

App allows you to fill your Octopus card without directly using the machines at the MTR and to collect the consumption voucher subsidy!

Taobao

Online-shopping app with a wide variety of selection of good quality products for very cheap prices

Foodpanda

food delivery services. You have to pay a delivery fee except promotional hours such as 3-5pm.

Openrice

A food search app/website. Almost every single restaurant is listed on here. If you ever run out of options, just use this app to find options.

Carousell

An app to buy and sell either new or second-hand (good condition) products at reasonable prices.

GoGo Van

If you ever want to move large and bulky items around Hong Kong that may not fit in a standard taxi or vehicle.

Citymapper

Similar to Google Maps, but can show more alternative routes for travelling around Hong Kong and more accurate walking routes.

GENERAL SHOPPING

DAILY NECESSITIES

Living Plaza by AEON

From here, you can basically buy all the things you need to survive in Hong Kong. These range from stationaries, kitchen supplies, basic electronics and more! You can find one right outside park n shop in Kennedy Town.

Wellcome

At the bottom of our hill you can buy all your food and living essentials that you need. Conveniently it is in the best location as it is only 2 minutes away from the dorms! Park n Shop is an alternative store :)

IKEA @ Causeway Bay

Hong Kong IKEAs are comparably small to what you might expect, but you can buy all the necessities for a relatively decent price with good quality!

The closest one is in Causeway Bay!

Mannings

You can find Manning in Kennedy Town to buy health, personal care and beauty products including shampoos, lotions, basic medications, sunscreen, etc.

PONZI SCHEMES



Beware of phone scams! They have become increasingly very common in Hong Kong and usually start with the number 3.

They can pretend to act as government officials and ask you to provide your personal details. Or even convince you to invest in products that seem attractive to you. Remember to not fall in their trap! End the call as soon as you can.

